



# WIROA STATION

BAY OF ISLANDS

November 2011



**Main Headland**













**Main Headland**







**North View – Top Paddock**







Headland Beach







**Beach Pavilions**







**Beach Pavilions**





Beach Pavilions







**Wine Cellar**





**Wine Cellar**







The Farm





**Wiroa Lot 10**

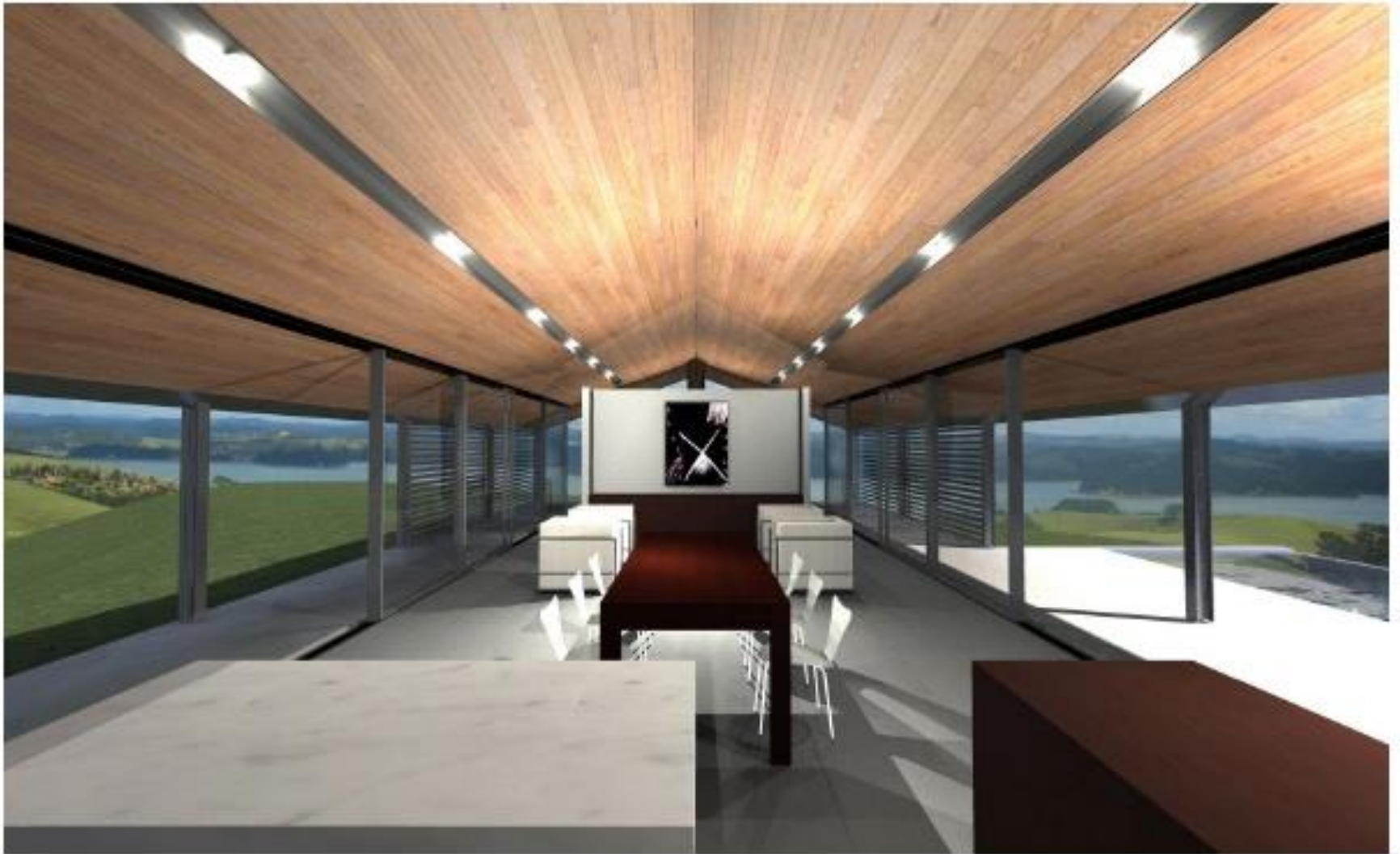






**Wiroa Lot 10**





Wiroa Lot 10







WIROA LOT 16 06 MAY 2008

Moden Architecture Partners Ltd | 120 Victoria Street, Christchurch | PO Box 25 323 Christchurch, New Zealand  
0337 902 8328 Office | 0337 962 6347 Fax | [www.modench.co.nz](http://www.modench.co.nz)

+ MAP

**Wiroa Lot 16**





WIROA LOT 16 08 MAY 2008

Modern Architecture Partners Ltd | 122 Victoria Street Christchurch | PO Box 25 333 Christchurch New Zealand  
030 952 4330 Office | 030 962 0541 Fax | [www.modarch.co.nz](http://www.modarch.co.nz)

+ MAP

Wiroa Lot 16







WIROA LOT 16 06 MAY 2008

Modern Architecture Partners Ltd | 122 Victoria Street Christchurch | PO Box 26 333 Christchurch New Zealand  
 (03) 962 8538 Office - (03) 962 8541 Fax - www.modarch.co.nz

+ MAP

**Wiroa Lot 16**



# Important Notice

- This document has been prepared by Williams Wiroa Trustees Limited as Trustee for Williams Wiroa Trust (together 'Williams') solely for information purposes in order to assist interested parties in making their evaluation of the property and does not purport to contain all the information that a prospective purchaser may require.
- Neither Williams nor their officers, employees, agents nor advisors gives any warranty or representation of accuracy or reliability and they take no responsibility therefore. None of them shall have any liability for any errors or omissions (including negligence), in this document, and each recipient waves all claims in that regard.
- This document has been prepared in good faith and with due care by Williams but Williams does not accept responsibility for the accuracy of any part of the information contained in this document, and the information contained in this document shall not be construed as a recommendation to purchase the property. Neither the delivery of this document, nor any sale made on a basis hereof, should under any circumstances constitute a representation or warranty or create by implication that the information contained in this document remains correct any time subsequent to the date. Williams is not obliged to update any information contained in this document, or to notify any person should any such information cease to be correct after the date hereof.
- Each interested party must satisfy itself as to all aspects of the property which it considers to be relevant to it, and in doing so must rely upon its own judgement, investigation and diligence.
- This document may contain "forward-looking statements" which are statements, estimates and forecasts with respect to future performance or events. In some cases, forward looking statements can be identified by the use of forward-looking terminology such as "may", "might", "will", "should", "expect", "estimate", or the negatives thereof or similar terminology. Forward-looking statements are based on underlying current assumptions and expectations and are subject to significant known and unknown risks, uncertainties and assumptions. These statements are only predictions based on our current expectations and projections about future events. Important factors could cause the actual results, level of activity, performance or achievements to differ materially from those expressed in the forward-looking statements. There can be no assurance that the forward-looking statements included in this document will prove to be accurate, and the future performance or events described in the forward-looking statements in this document might not occur. We do not undertake any obligation or liability with respect to and will not update, any forward-looking statements included herein.